

UPR Upper Torque Box Reinforcements Installation

- 1) Remove both sections of your rear seats.
- 2) Jack the vehicle up to a comfortable working height, and position jack stands under the vehicles frame rails allowing the rear-end to hang freely. **NOTE: Do not forget to chock the front wheels.**
- 3) With a jack stand under the rear end housing to keep it from falling, disconnect the top of your rear shocks.
- 4) Now lower your rear end so you can disconnect the upper control arms from the chassis. Still keep the jack under the rear end housing to keep it stable and prevent it from pulling on your brake lines.
- 5) Drill a 1/2" hole straight up through the factory supplied 1/2" hole in the top of your upper box, drilling through your inner floor pan. **NOTE: It is important to try to drill this hole as straight as possible. (See Figure #1)**
- 6) If you plan on welding in the boxes you will need to remove the sound deadening material from the inside floor pan of your car around the area that the inside curved floor plate will sit on before bolting in. (See Figure #2).
- 7) Inside the car, align the inside curved floor plate with the hole you just drilled. Insert a supplied 1/2" bolt with the supplied tapered spacer through the hole. Have a friend slip the lower support bracket into place and install a lock washer and nut. Lightly tighten the nut and bolt.
- 8) From inside the car, drill the other 1/2" hole down through the floor out the bottom of the lower support bracket. Now install the bolt and nut and tighten lightly.
- 9) From under the car, drill through the upper 3/8" hole until you go all the way through the inner floor plate. Install the 3/8" bolt and nut, lightly tighten the nut. Repeat this on the lower 3/8" hole.
- 10) Tighten all of the bolts and reinstall your control arms, shocks and rear seat.

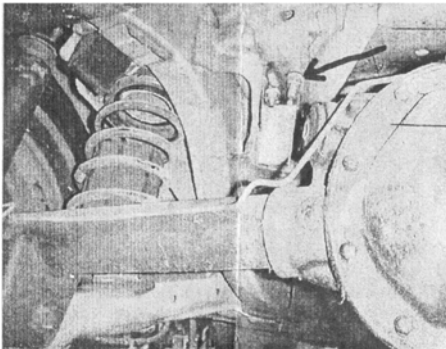


Figure #1

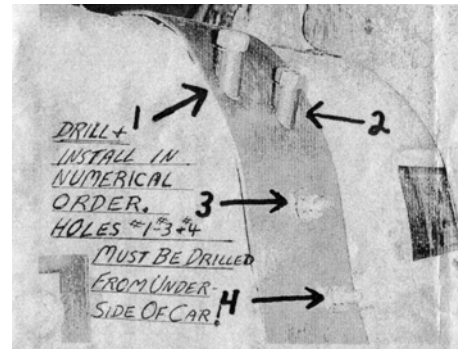


Figure #1

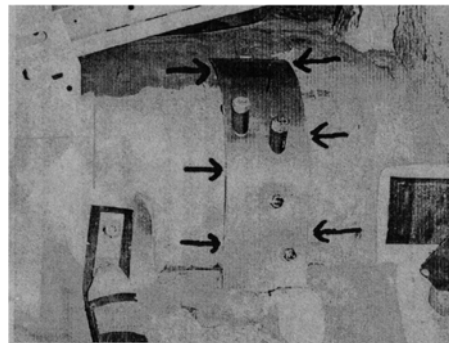


Figure #2

750 S Eastcoast Street • Lake Worth, FL 33460
561-588-6630
www.uprproducts.com